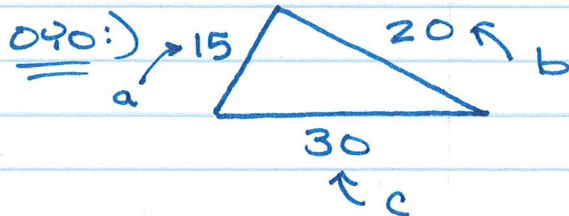


PHIL & NED NOTES

DETERMINE IF THE 3 SIDES CAN BE
ARRANGED TO MAKE A RIGHT TRIANGLE.

Ex: 5ft, 13ft, 12ft
↑ ↑ ↑
a c b
 $a^2 + b^2 = c^2$
 $(5)^2 + (12)^2 = (13)^2$
 $25 + 144 = 169$
 $169 = 169 \checkmark$

YES!



$a^2 + b^2 = c^2$
 $(15)^2 + (20)^2 = (30)^2$
 $225 + 400 = 900$
 $625 = 900 \ddot{\smile}$

NO!