

1. Determine the slope and the unit rate:

X	Y
Number of Apples	Cost (\$)
2	0.80
4	1.60
6	2.40
8	3.20

SLOPE = 0.4
= $\frac{4}{10}$

UNIT RATE = $\frac{\$ 0.80}{2 \text{ APPLES}}$
= $\frac{\$ 0.40}{1 \text{ APPLE}}$

Slope $\frac{2}{5}$

Unit Rate 40¢ / APPLE

LIKE y

LIKE x

2.

$n = 1.5h$

n is total inches of rain
h is number of hours

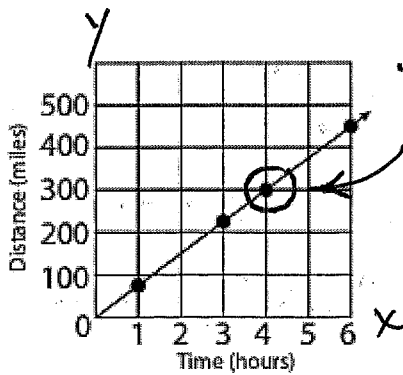
TAKES THE FORM

$y = mx$
SLOPE = 1.5
 $1\frac{3}{2}$
 $1\frac{1}{2}$

Slope $\frac{3}{2}$

Unit Rate 1.5 IN / HR

3.



$\frac{300 \text{ mi}}{4 \text{ HR}}$
75 mi / HR

Slope $\frac{75}{1}$

Unit Rate 75 mi / HR

4. Consider that over 3.8 inches of rain fell in Lansing, Michigan on Monday, August 11th, 2016 from 11 AM to 2 PM. News reporters want to know if that sets the record for the city. In 1905, a record 1.2 inches of rain fell each hour for 3 hours. Which is the greater rainfall?

2016
3.8 IN OF RAIN
 3 HRS
 1.26 IN/HR.

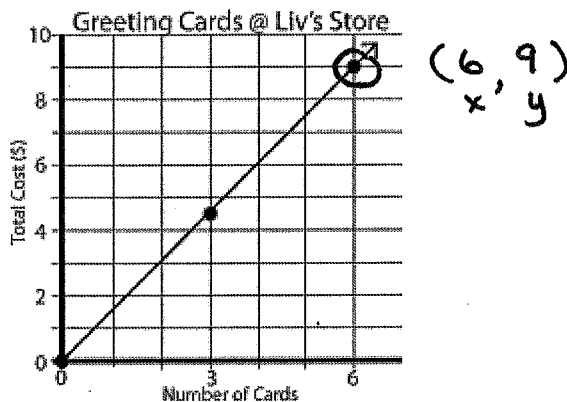
1905
 1.2 IN/HR.

GREATER RAINFALL
 HAPPENED IN 2016.

5. Compare the proportional relationships. Which of the two stores charges the least for greeting cards? Explain your reasoning.

Greeting Cards @ Bob's Store

Number of Cards	1	2	3	4
Total Cost (\$)	1.65	3.30	4.95	6.60



BOB
 *1.65 PER CARD

LIV
 *9
 6 CARDS
 *1.50/CARD

LIV HAS
 LESS EXPENSIVE
 CARDS.