

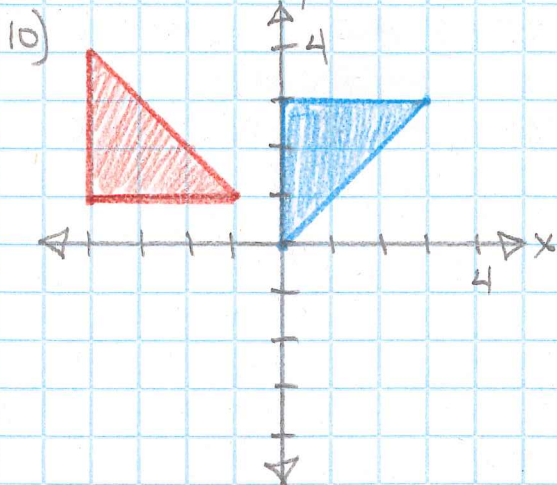
SEC 2.4

#10, 11, 12, 14, 16, 18

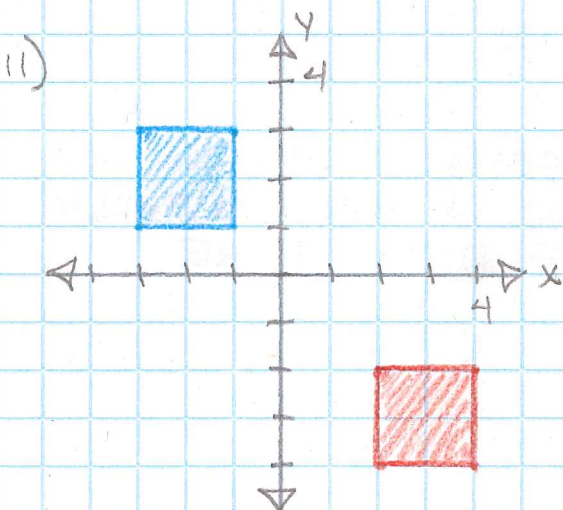
BEN WILSON

PER 1

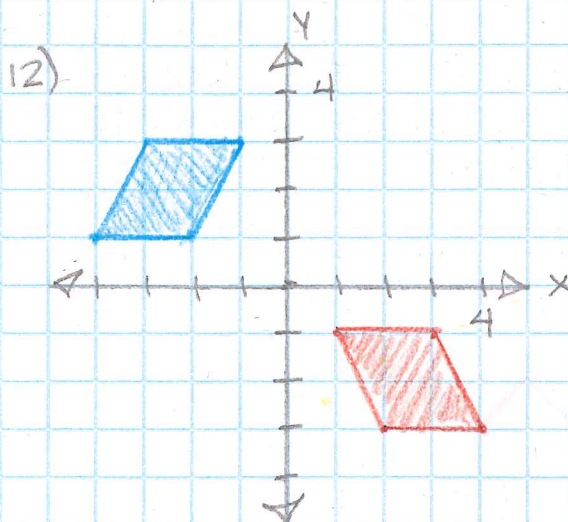
10/11/19



ROTATE THE BLUE FIGURE 90° CCW ABOUT THE ORIGIN, THEN SHIFT IT LEFT 1 UNIT & UP 1 UNIT.

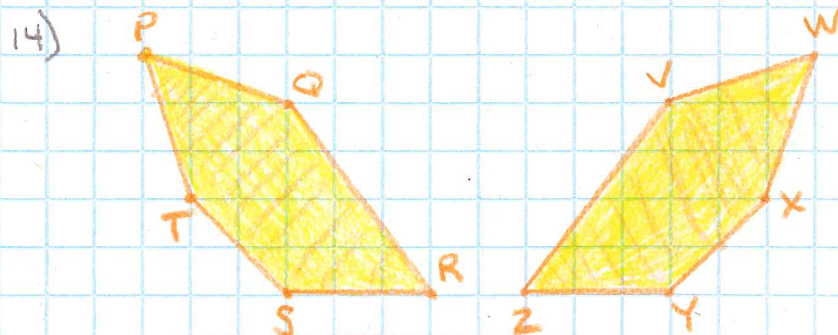


REFLECT THE BLUE FIGURE IN THE X-AXIS, AND THEN AGAIN IN THE Y-AXIS. THEN SHIFT IT RIGHT 1 AND DOWN 1.



REFLECT THE RED FIGURE IN THE X-AXIS, AND THEN TRANSLATE IT 5 UNITS LEFT.

MY FRIEND IS CORRECT. REFLECTING THE RED SHAPE IN THE X-AXIS WILL FLIP IT SO IT IS SLANTED IN THE SAME WAY AS THE BLUE SHAPE. FROM THERE, IF IT IS TRANSLATED 5 UNITS LEFT, IT WILL BE PERFECTLY ON TOP OF THE BLUE FIGURE.



$\angle P \cong \angle W$	$\overline{PQ} \cong \overline{VW}$
$\angle Q \cong \angle V$	$\overline{QR} \cong \overline{VZ}$
$\angle R \cong \angle Z$	$\overline{RS} \cong \overline{ZY}$
$\angle S \cong \angle Y$	$\overline{ST} \cong \overline{YX}$
$\angle T \cong \angle X$	$\overline{TP} \cong \overline{XW}$

16, 18

16) WHEN 2 FIGURES ARE CONGRUENT, THEY WILL ALSO HAVE CONGRUENT PERIMETERS (BECAUSE ALL THEIR SIDE LENGTHS ARE CONGRUENT) AND CONGRUENT AREAS (BECAUSE THEY ENCLOSE THE SAME AMOUNT OF SQUARES).



THE FIGURES ARE CONGRUENT BECAUSE IF YOU FLIP THE BLUE FIGURE VERTICALLY & HORIZONTALLY, IT CAN BE TRANSLATED ONTO THE RED FIGURE PERFECTLY.