

SEC 2.2

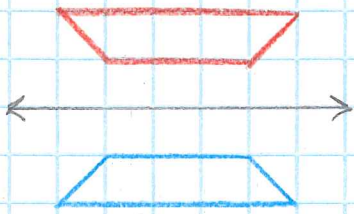
13, 17, 20, 25, 31, 32, 35

BEN WILSON

PER 1

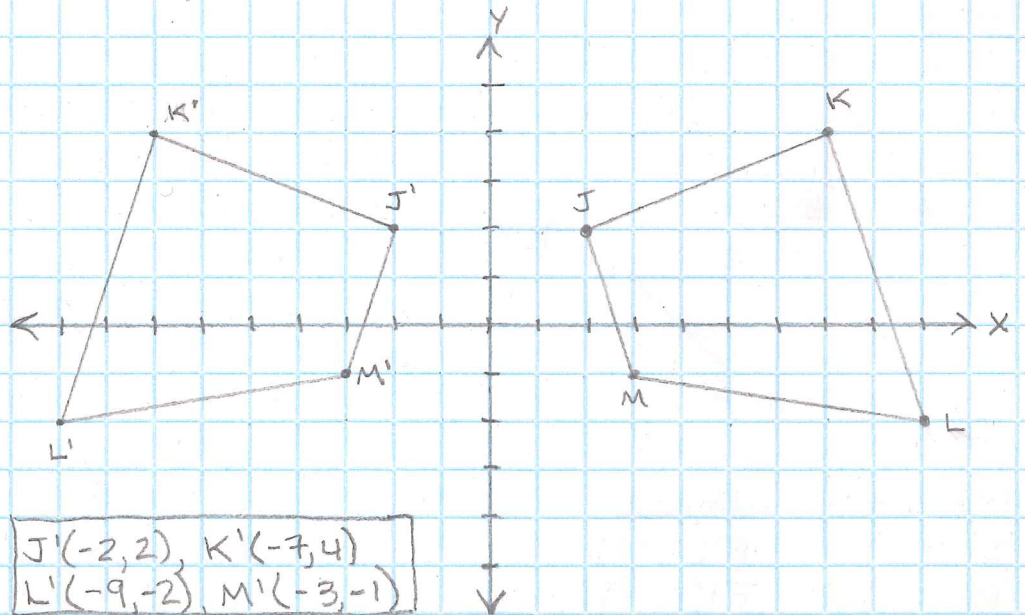
10/6/19

13)



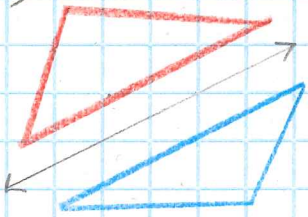
YES, THE BLUE FIGURE IS A REFLECTION OF THE RED FIGURE.

25) $J(2,2), K(7,4), L(9,-2), M(3,-1)$



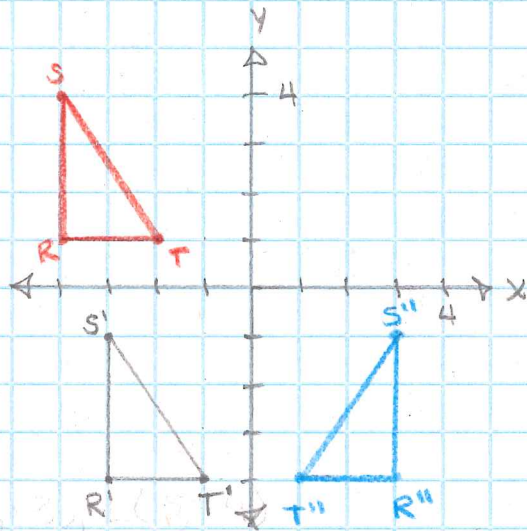
$J'(-2,2), K'(-7,4)$
 $L'(-9,-2), M'(-3,-1)$

17)

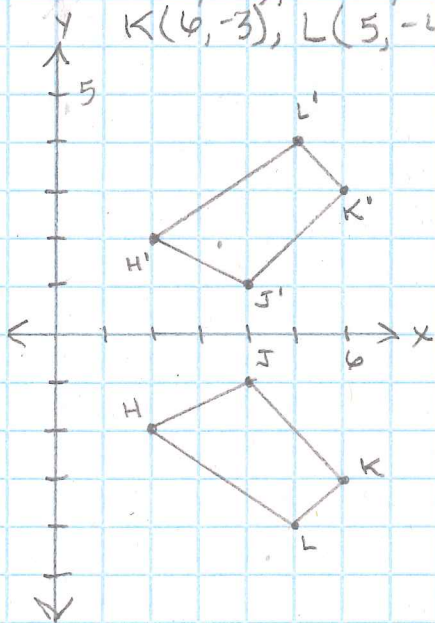


NO, THE BLUE FIGURE IS NOT A REFLECTION OF THE RED FIGURE.

31)

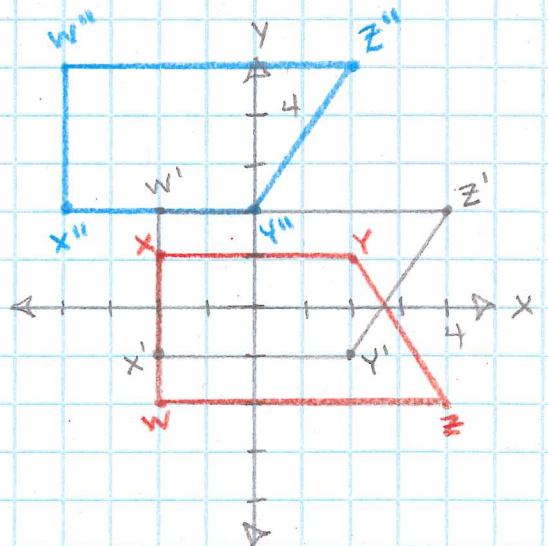


20) $H(2,-2), J(4,-1), K(6,-3), L(5,-4)$

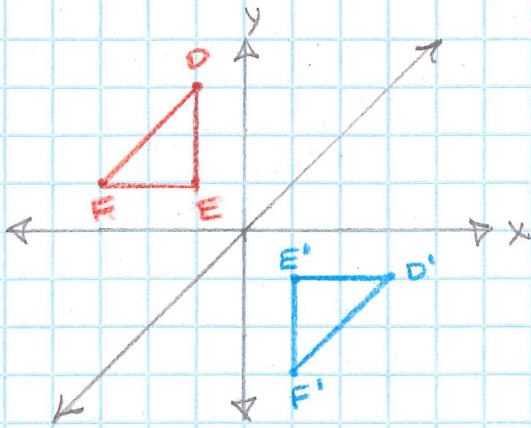


$H'(2,2)$
 $J'(4,1)$
 $K'(6,3)$
 $L'(5,4)$

32)



35)



<u>PRE IMAGE</u>	<u>IMAGE</u>
E(-1, 1)	E'(1, -1)
F(-3, 1)	F'(1, -3)
D(-1, 3)	D'(3, -1)

THE X & Y SWITCHED
PLACES

$$(x, y) \rightarrow (y, x)$$